

ordering information

Low profile Silk+ offers the possibility to treat small arteries down to Ø 1.5mm.

Silk+	Reference	Vessel Ø (mm)		Silk+ length at nominal ø (mm)		Unconstrained stent		Delivery catheter	
		prox	dist	prox	dist	Ø (mm)	Length (mm)		
Silk+	SILK 2,0x15	1,50 to 2,25		15		2,5	10	VASCO+21	
	SILK 2,0x20			20			11		
	SILK 2,5x15	2,00 to 2,75		15		3,0	10		
	SILK 2,5x20			20			13		
	SILK 2,5x25			25			16		
	SILK 3,0x15	2,50 to 3,25		15		3,5	10		VASCO+21
	SILK 3,0x20			20			13		
	SILK 3,0x25			25			16		
	SILK 3,0x30			30			19		
	SILK 3,5x15	3,00 to 3,75		15		4,0	11		VASCO+21
	SILK 3,5x20			20			12		
	SILK 3,5x25			25			14		
SILK 3,5x30	30			15					
SILK 3,5x35	35			17					
SILK 4,0x15	3,50 to 4,25		15		4,5	10	VASCO+21		
SILK 4,0x20			20			12			
SILK 4,0x25			25			14			
SILK 4,0x30			30			16			
SILK 4,0x35			35			18			
SILK 4,0x40			40			20			
SILK 4,5x15	4,00 to 4,75		15		5,0	8	VASCO+21		
SILK 4,5x20			20			10			
SILK 4,5x25			25			12			
SILK 4,5x30			30			15			
SILK 4,5x35			35			17			
SILK 4,5x40			40			19			
SILK 5,0x25	4,50 to 5,25		25		5,5	11	VASCO+25		
SILK 5,0x30			30			13			
SILK 5,0x40			40			17			
SILK 5,5x25	5,00 to 5,75		25		6,0	11	VASCO+25		
SILK 5,5x30			30			13			
SILK 5,5x40			40			17			

Tapered Silk+	Reference	Vessel Ø (mm)		Silk+ length at nominal ø (mm)		Unconstrained stent		Delivery catheter
		prox	dist	prox	dist	Ø (mm)	Length (mm)	
Tapered Silk+	SILKP 4,0D3,0x30	3,50 to 4,25	2,50 to 3,25	12	10	4,5/3,5	15	VASCO+21
	SILKP 4,5D3,0x25	4,00 to 4,75	2,50 to 3,25	12	10	5,0/3,5	20	
	SILKP 4,5D3,5x30	4,00 to 4,75	3,00 to 3,75	11	15	5,0/4,0	16	

The self-expandable SILK+ stents are designed for the treatment of intracranial aneurysms and should be used only by clinicians trained in the placement of intracranial stents. Class III CE0297 in compliance with Medical Device Directive (MDD 93/42/EEC amended by 2007/47/EC). Manufactured by BALT Extrusion SAS. Carefully read the instructions for use before use. First CE marking:2012. VASCO+ is a reinforced micro-catheter intended for injection of diagnostic or therapeutic product, to position pushable coils "SPIRALES" or detachable coils especially the ones of MDS « mechanical detachment system », for the use of the self-expanding stent LEO+ or SILK+. Class III CE0297 in compliance with Medical Device Directive (MDD 93/42/EEC amended by 2007/47/EC). Manufactured by BALT Extrusion SAS. Carefully read the instructions for use before use. First CE marking:2004.

The content of this document, in particular data, information, trademarks and logos is BALT SAS and affiliates' sole property. © 2019 BALT SAS and affiliates, all rights reserved. All representation and/or reproduction, whether in part or in full, is forbidden and would be considered a violation of BALT SAS and affiliates' copyrights and other intellectual proprietary rights. This document with associated pictures is non-contractual and is solely dedicated to healthcare professionals and BALT's distributors (BALT's supplier's distributors). It cannot be distributed or given to patients. The products commercialized by BALT shall exclusively be used in accordance with the instructions for use included in the boxes. DC025GB (01/2019)

Balt
 10, rue de la Croix Vigneron, 95160 Montmorency France
 Tel. : +33 (0)1 39 89 46 41
 Fax : +33 (0)1 34 17 03 46
www.balt.fr



silk+

the original
flow diverter



silk⁺

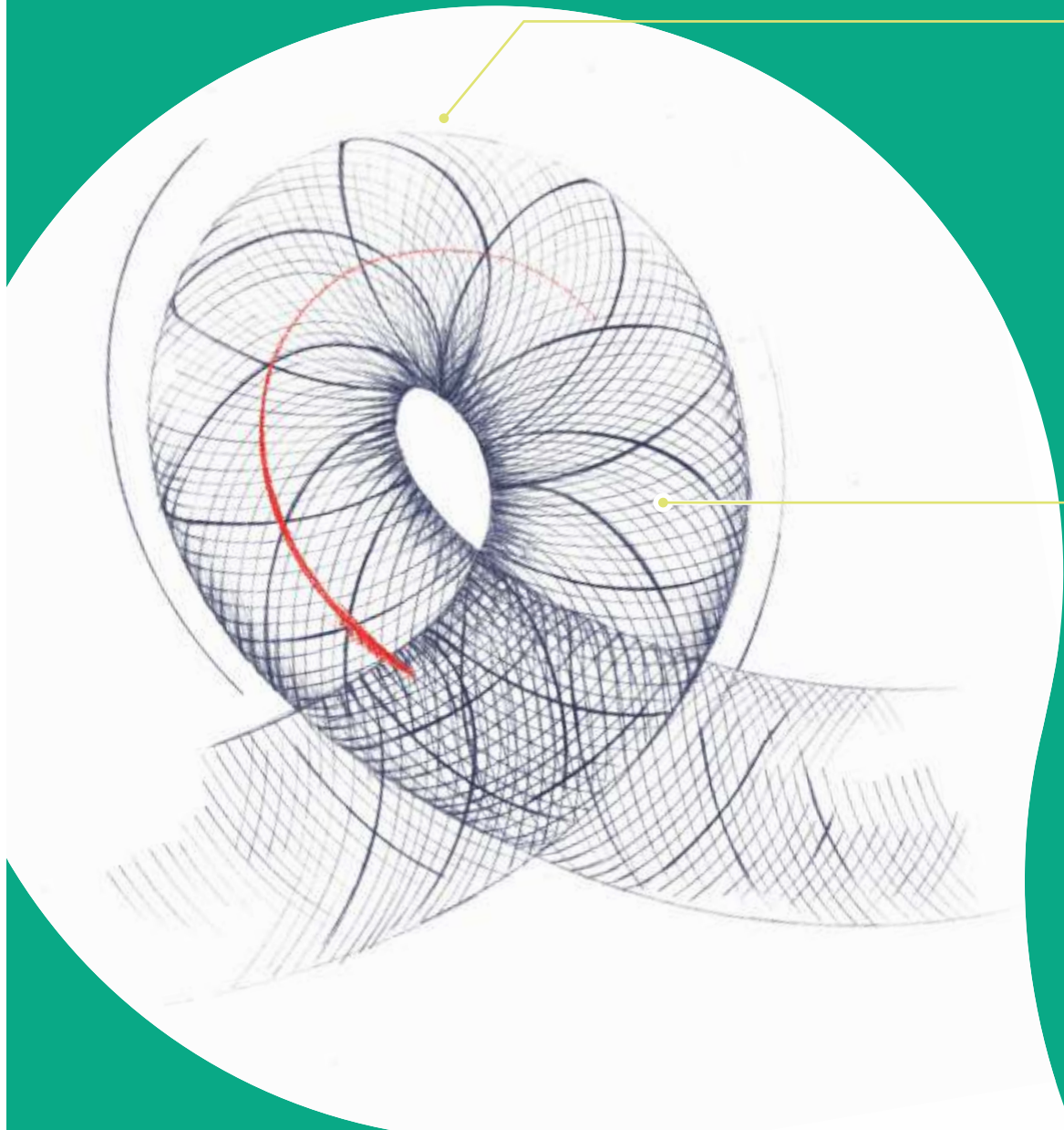
Combining reliability & effectiveness¹

Designed for the treatment of intracranial aneurysms

82,2%

occlusion rate at
12 months¹

aneurysm treatment



- Adequate behaviour even in distal & tortuous anatomy

Flexibility
thanks to the nickel titanium materials

Conformability
given by the sliding-cell technology

Smooth wall apposition
as a result of the rounded short flared ends

Navigability
with VASCO+21 low profile
delivery microcatheter

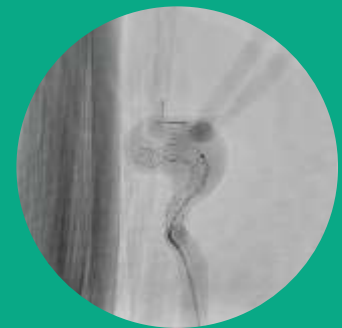
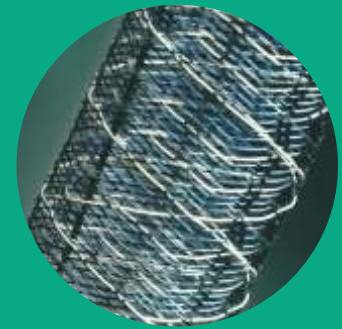
- Aneurysm exclusion & vessel wall reconstruction

Flow diversion & neck coverage
provided by 48 dense braided wires

**Precise & controlled
deployment**

Visibility
four helicoidal markers on the entire
body of the stent & border effect

Resheathability
up to 90% of deployed length²



resheathable
up to **90%**
of deployed
length²

References:

1. DIVERSION clinical study report: Evaluation of the Use of Intravascular Flow Diverters in the Treatment of Intracranial Aneurysms
2. Internal data